



**MOLD DESIGN
MODEL DESIGN
PLASTIC INJECTION**

WE PRODUCE QUALITY

PRODUCT CATALOGUE

KAYAPA MH. ORKİDE CD. NO:1. 16315 NİLÜFER/BURSA
www.alpermak.com
info@alpermak.com



ABOUT US

Our company started its operations in 2009, initially focusing on subcontracted machining and mold manufacturing. Over time, we phased out subcontracted part manufacturing and shifted our emphasis to mold production. Primarily specializing in plastic mold manufacturing, our company has enhanced its expertise in metal injection molds, reaching the present day. In response to growing customer demands, we acquired our first plastic injection machine in 2011, initiating plastic part production. In the subsequent years, through strategic investments, we currently operate a total of 6 plastic injection machines, enabling us to sustain our plastic production activities.

In 2021, our company relocated to a new facility in the Kayapa Organized Industrial Zone, spanning 1,200 square meters of closed area, to enhance its capacity and provide higher quality services to its customers.

As Alpermak, we are committed to ongoing investments in line with our goals of continuous and healthy growth. We closely monitor technological advancements and strive to achieve sustainable and lean production processes through digital transformation.

Currently, our mold department is equipped with 2 CNC vertical machining centers, 2 EDM machines, 1 mold milling machine, 1 universal lathe, and other machinery and equipment, allowing us to continue mold production.

In our plastic division, we operate a total of 6 plastic injection machines, including 1 machine with 80 tons (150g), 1 with 120 tons (250g), 1 with 160 tons (350g), 1 with 200 tons (450g), 1 with 320 tons (900g), and 1 with 400 tons (1,500g), sustaining our production capabilities. We are dedicated to maintaining our commitment to technological advancements and providing quality services to our customers as we continue to grow.



OUR PRODUCT GROUPS

As a company, our strategy is to provide services to various sectors. The diversity of the sectors we serve in mold production and plastic manufacturing provides us with valuable experience and enhances our resilience against economic challenges that may arise from sectoral crises.

Some of the sectors we serve include:



AUTOMOTIVE GROUP

Page 4 - 5



FURNITURE GROUP

Page 7 - 22



MACHINE GROUP

Page 24 - 27



OTHER PRODUCTS

Page 28



**Ford Connect Front
Grille (2002 - 2013)**



**Ford Connect V Belt
Cover (2002 - 2013)**



**Ford Connect Hood
Trim (2002 - 2013)**



**Ford Connect Bumper
Corner (Right) (2002 - 2013)**



**Ford Connect Bumper
Corner (Left) (2002 - 2013)**



**Ford Exhaust Manifold
Cover (2002 - 2013)**



Plastic Clips (Universal)

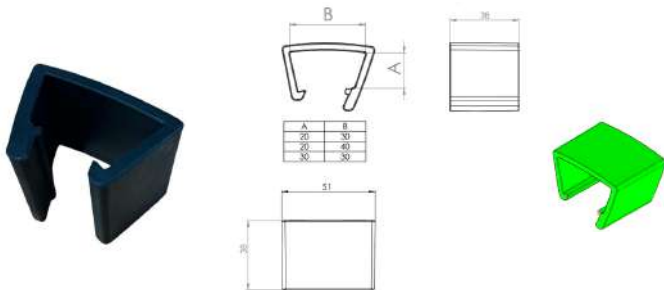


**Vito Rear Interior Door
Handle (Left)**



ALL PLINTH PLASTIC PARTS





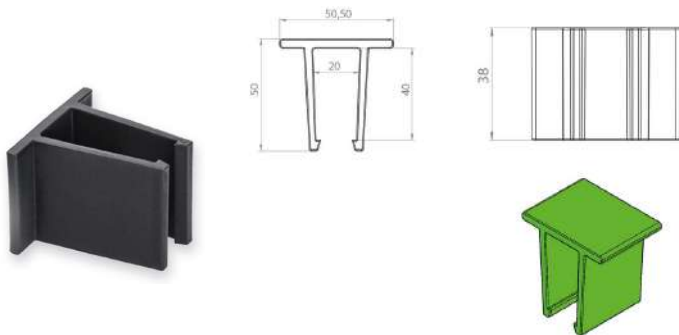
**20x30mm, 30x30mm, 20x40mm
Lid Lifter**

Product: Lid Lifter

Material: PP

Functional Areas: Plinth, Furniture

Color:



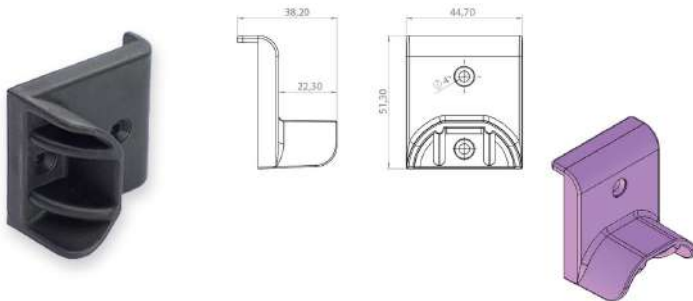
**20x40mm
Center Lid Lifter**

Product: Center Lid Lifter

Material: PP

Functional Areas: Plinth

Color:



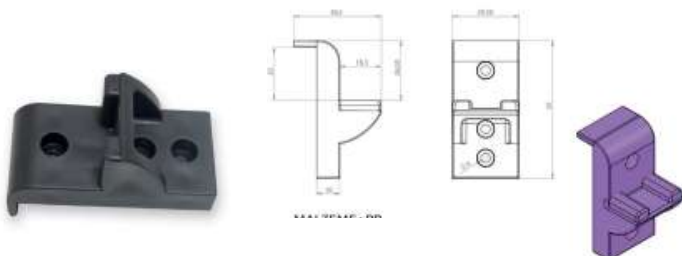
**Multi-Functional
Stoper**

Product: Stoper

Material: PP

Functional Areas: Plinth

Color:



**20x30mm
Base Balance Stopper (With Clip)**

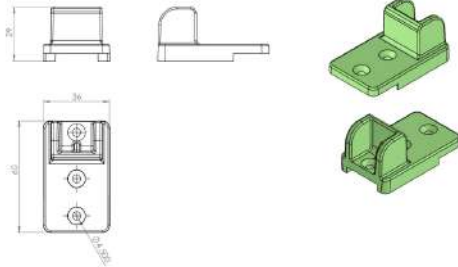
Product: Stoper

Material: PP

Functional Areas: Plinth, Furniture

Color:





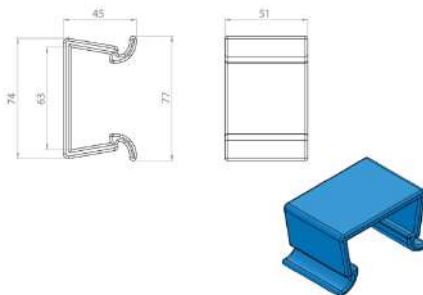
**20x40mm
Base Balance Stopper**

Product: Stoper

Material: PP

Functional Areas: Plinth, Furniture

Color: 



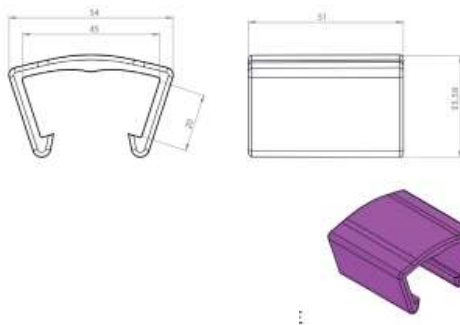
**Plinth
Connector Plastic**

Product: Connector Plastic

Material: PP

Functional Areas: Bed Base

Color: 



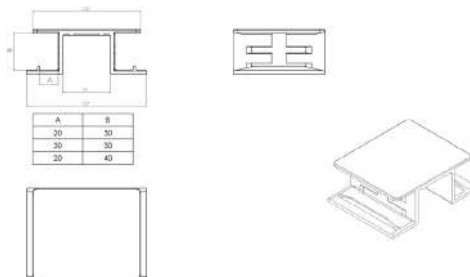
**Solid
Connection Plastic**

Product: Connection Plastic

Material: PP

Functional Areas: Base Connection

Color: 



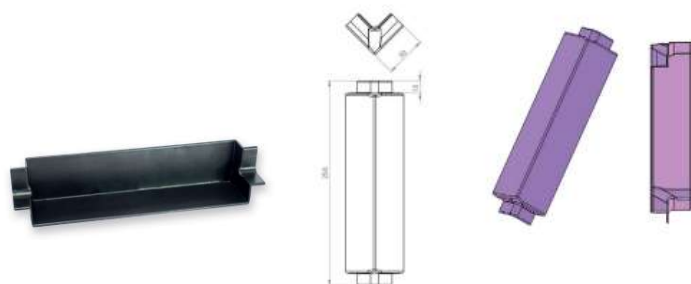
**20x30mm, 30x30mm, 20x40mm
Base Lid Joining Plastic**

Product: Connection Plastic

Material: PP

Functional Areas: Plinth, Furniture

Color: 



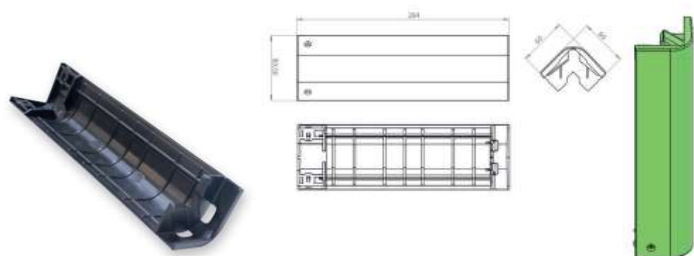
**ABS
Corner Plastic**

Product: Corner Plastic

Material: ABS

Functional Areas: Plinth

Color:



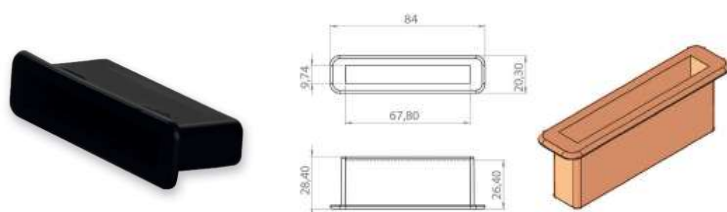
**Oval
Corner Plastic**

Product: Corner Plastic

Material: PP

Functional Areas: Plinth, Furniture

Color:



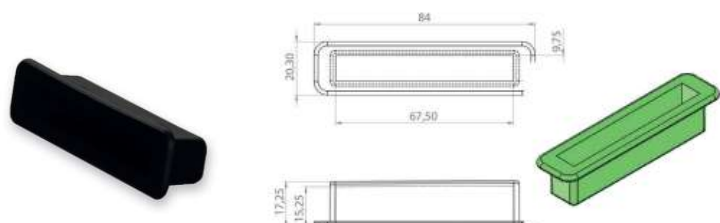
**Large
Strip Holder**

Product: Strip Holder

Material: PE

Functional Areas: Bed Base

Color:



**Small
Strip Holder**

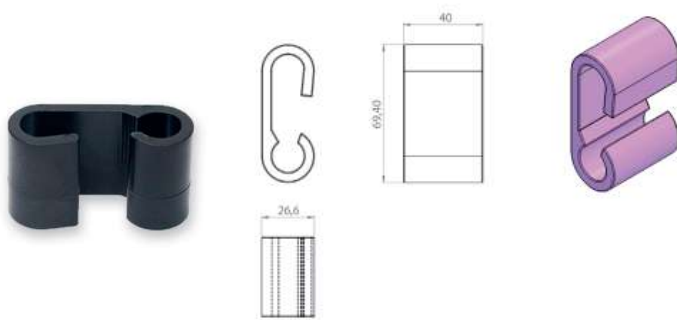
Product: Strip Holder

Material: PE

Functional Areas: Bed Base

Color:





**Folding Base
Joining Plastic**

Product: Connection Plastic

Material: PP

Functional Areas: Plinth

Color: 



**Ø76mm
Mattist Base Foot**

Product: Base Foot

Material: PP

Functional Areas: Plinth

Color: 



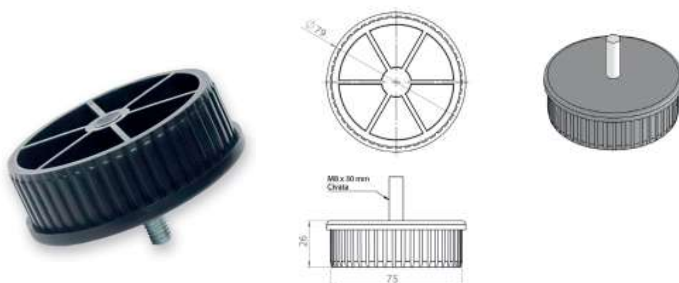
**Spare Bed
Base Foot**

Product: Base Foot

Material: PP

Functional Areas: Plinth

Color: 



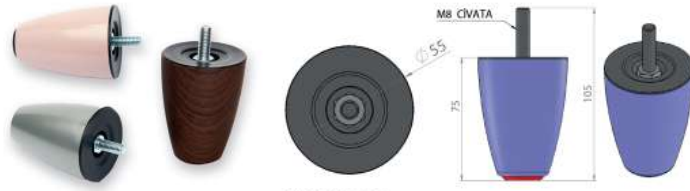
**Ø76mm
Threaded Foot**

Product: Threaded Foot

Material: PP

Functional Areas: Plinth

Color: 



75mm, 100mm

Base Foot

Product: Base Foot

Material: ABS

Functional Areas: Furniture, Sofa, Plinth

Color:



Covering:

Wood Pattern (Optional)

20x30mm, 20x40mm

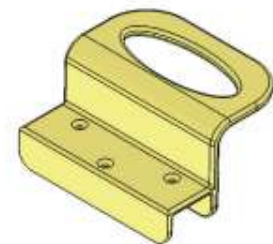
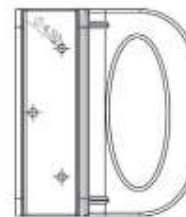
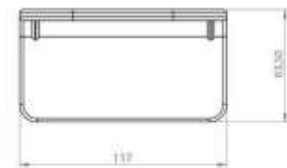
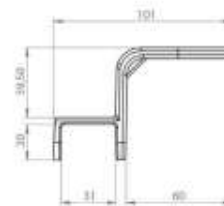
Base Holding Handle

Product: Base Holding Handle

Material: PC

Functional Areas: Plinth, Furniture etc.

Color: Transparent



Base

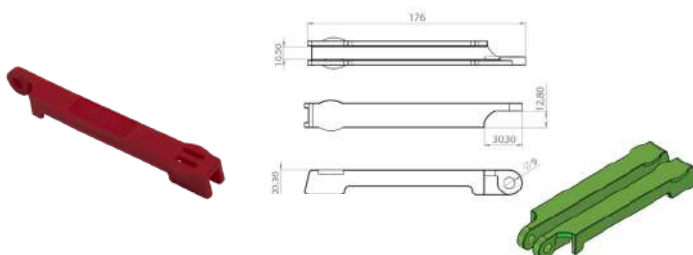
Safety Lock (Large)

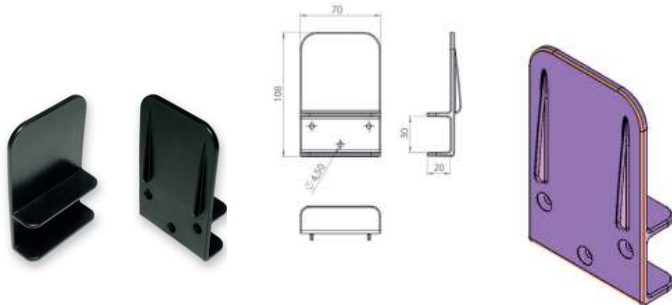
Product: Base Safety Lock

Material: PPC

Functional Areas: Plinth

Color:





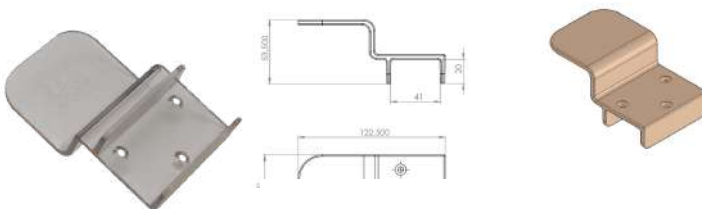
**Bed Base
Stopper**

Product: Bed Stopper

Material: POM

Functional Areas: Plinth, Bed

Color: 



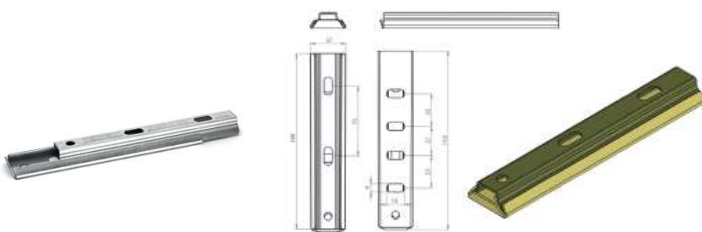
**20x40mm
Bedside Stopper**

Product: Bed Stopper

Material: PC

Functional Areas: Plinth

Color: 



**Base Headbord
Handle Slide**

Product: Handle Slide

Material: 1,5mm Sac

Functional Areas: Base Headboard, Furniture

Color: Galvanized Coating



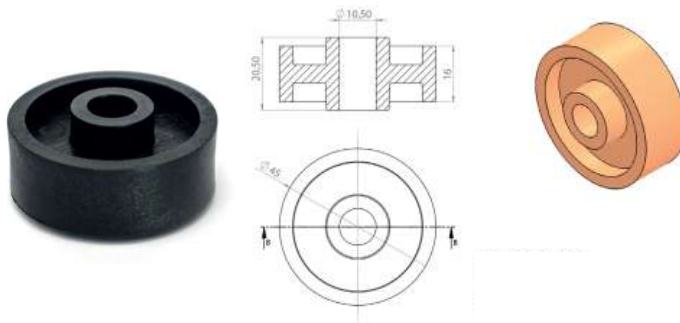
**Base Small
Corner Plastic**

Product: Corner Plastic

Material: PP

Functional Areas: Base Headboard

Color: 



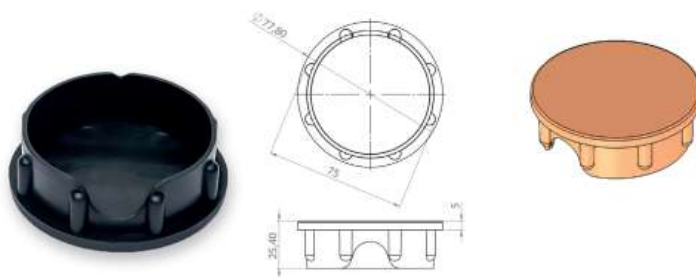
**Spare
Bed Caster**

Product: Bed Caster

Material: PA6

Functional Areas: Furniture

Color: 



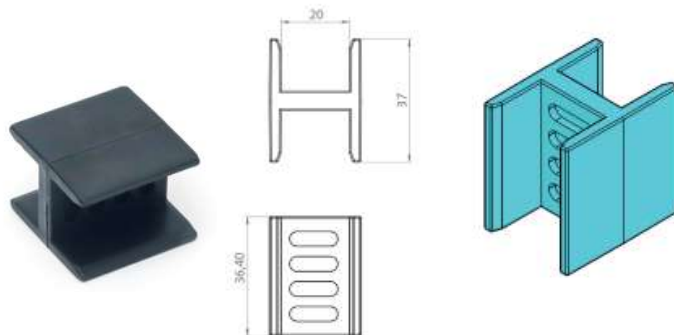
**Ø76mm
Pipe Cap**

Product: Pipe Cap

Material: PA6

Functional Areas: Plinth

Color: 



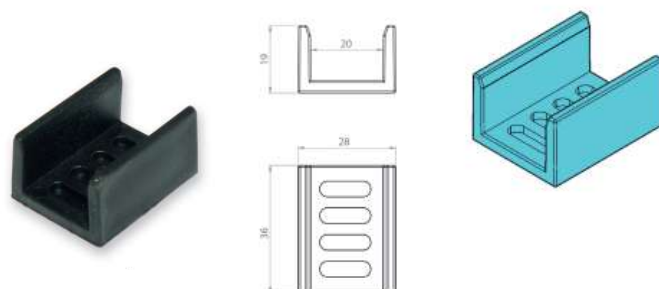
**H
Plastic**

Product: H Plastic

Material: PP

Functional Areas: Plinth, Furniture

Color: 



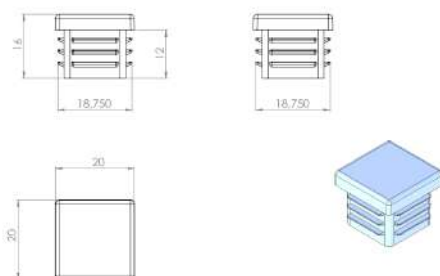
**U
Plastic**

Product: U Plastic

Material: PP

Functional Areas: Furniture

Color: 



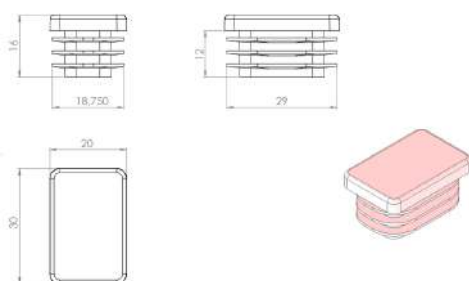
20x20mm Profile Cap

Product: Profile Cap

Material: PP

Functional Areas: Universal

Color: 



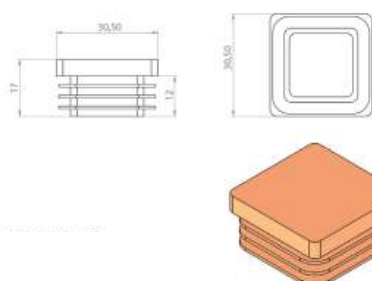
20x30mm Profile Cap

Product: Profile Cap

Material: PP

Functional Areas: Universal

Color: 



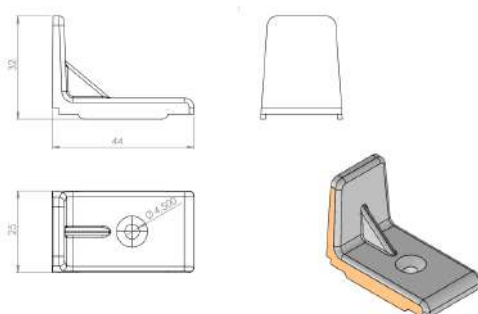
30x30mm Profile Cap

Product: Profile Cap

Material: PP

Functional Areas: Furniture etc.

Color: 



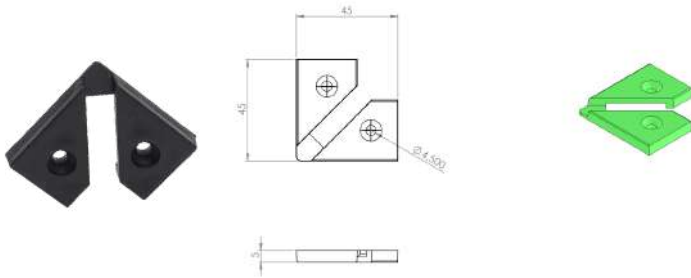
Universal MDF Holder

Product: MDF Holder

Material: PP

Functional Areas: Plinth, Furniture

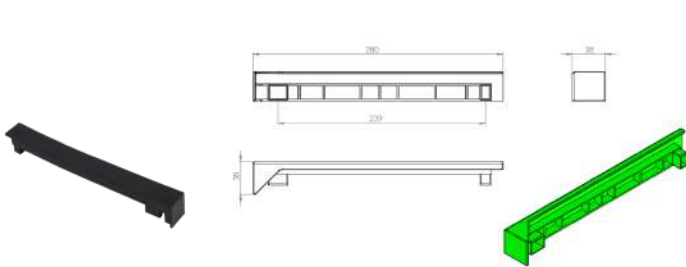
Color: 



**Corner
Connection Plastic**

Product: Connection Plastic
Material: PP
Functional Areas: Furniture

Color:



**Back Corner
Guard Plastic (Right)**

Product: Back Corner Guard
Material: PP
Functional Areas: Plinth

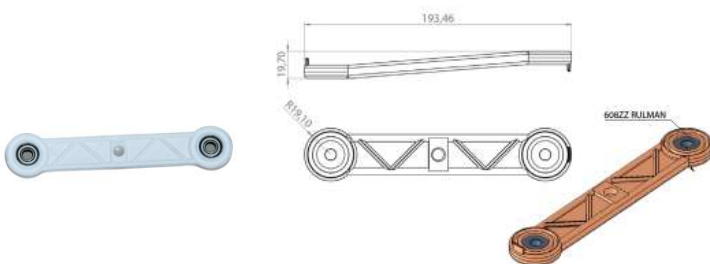
Color:



**Chair
Leg Cap**

Product: Leg Cap
Material: PVC
Kullanım Alanı : Chairs etc.

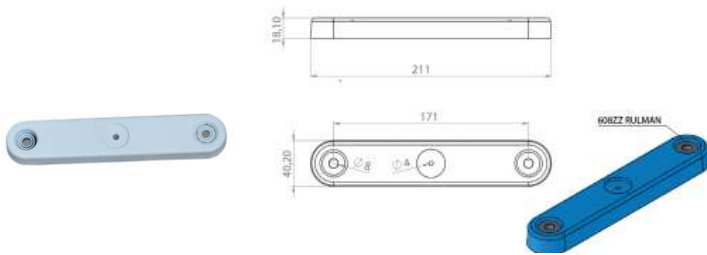
Color:



**Universal
Swinging Device**

Product: Swinging Device
Material: PPC
Functional Areas: Baby Cradle

Color:



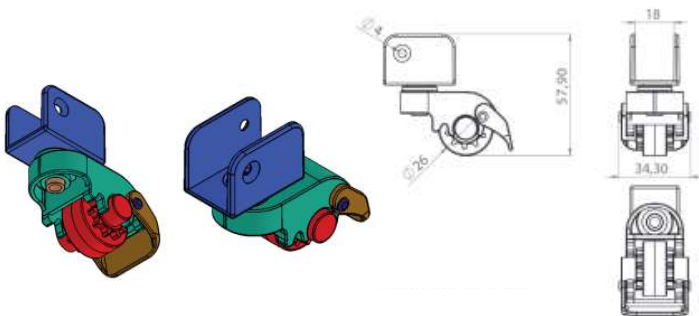
**Basket
Swinging Mechanism**

Product: Swinging Device

Material: ABS

Functional Areas: Baby Basket, Cradle

Color:



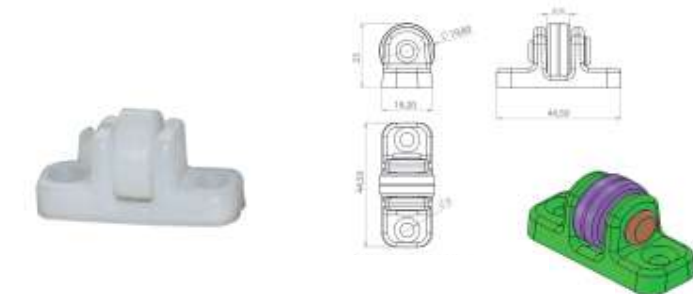
**Swivel
Brake Wheel**

Product: Wheel

Material: POM, PP

Functional Areas: Cradle, Furniture etc.

Color:



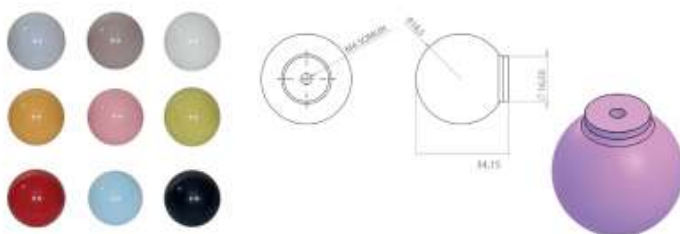
**Cradle
Table Wheel**

Product: Wheel

Material: PA6

Functional Areas: Cradle, Table etc.

Color:



**Plastic Furniture
Handle**

Product: Furniture Handle

Material: PP

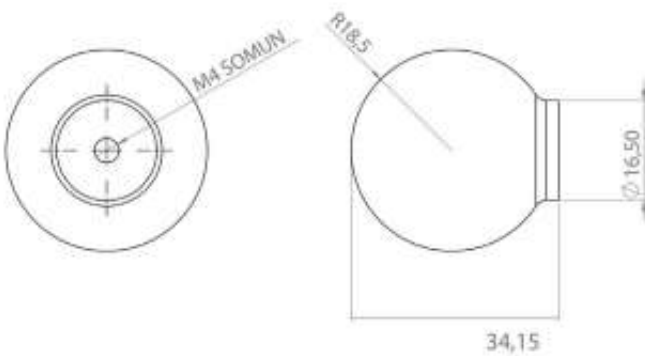
Functional Areas: All kinds of furniture.

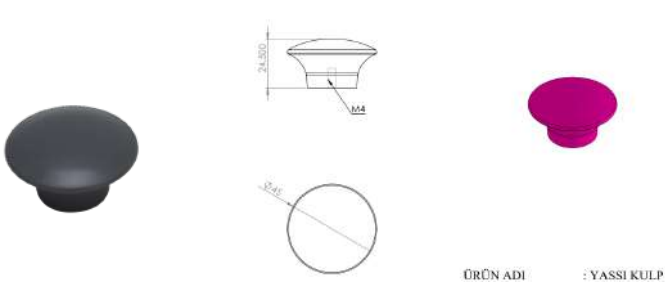
Explanation : M4 nut is installed for assembly.

Color:



FURNITURE HANDLES





ÖRÜN ADI : YASSI KULP

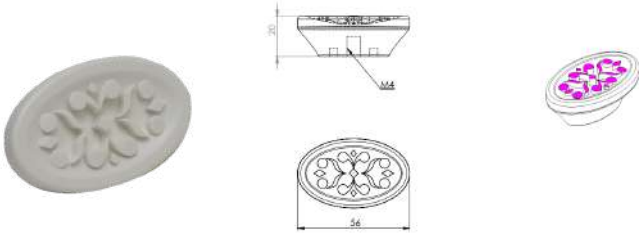
Flat Handle

Product: Handle

Material: ABS

Functional Areas: Furniture etc.

Color:



Fancy Handle

Product: Handle

Material: ABS

Functional Areas: Furniture etc.

Color:



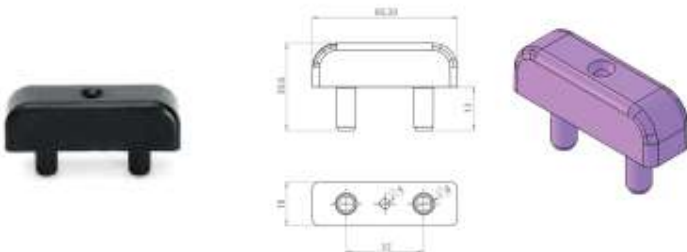
Pull Handle

Product: Handle

Material: ABS

Functional Areas: Furniture

Color:



Plastic Dip Connection Wedge

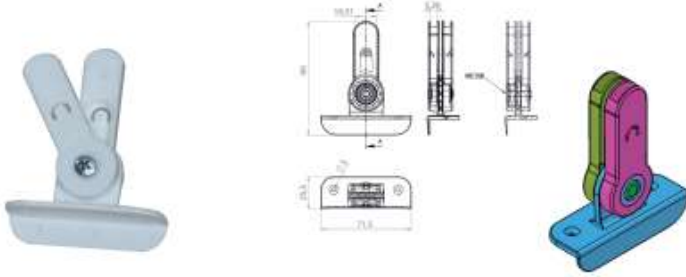
Product: Connection Wedge

Material: PA6

Functional Areas: Furniture

Color:





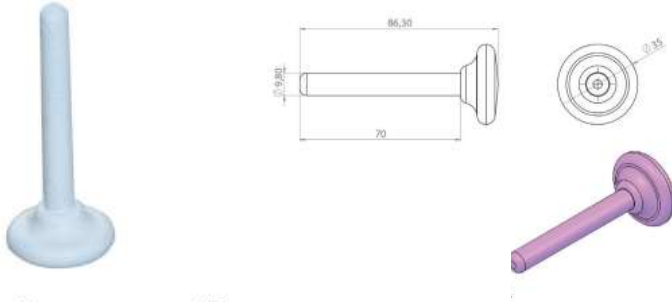
Canopy Attachment

Product: Canopy Attachment

Material: PP

Functional Areas: Cradle, Baby Carriage

Color:



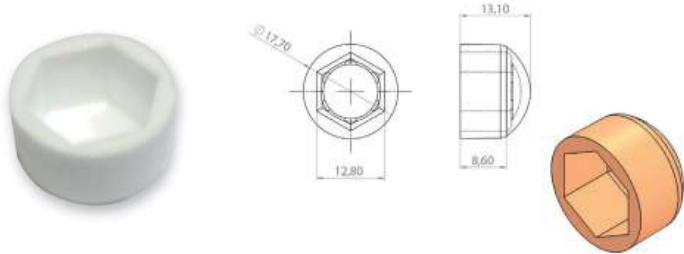
Cardle Fixing Plastic

Product: Fixing Plastic

Material: ABS

Functional Areas: Cradle, Basket etc.

Color:



Bolt Cover Cap

Product: Cover Cap

Material: PE

Functional Areas: Hidden Bolt Areas

Color:



Ø13mm Plastic Grommet

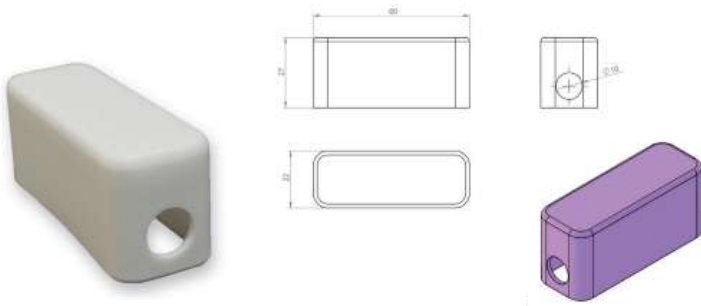
Product: Plastic Grommet

Material: PA6

Functional Areas: Universal

Color:





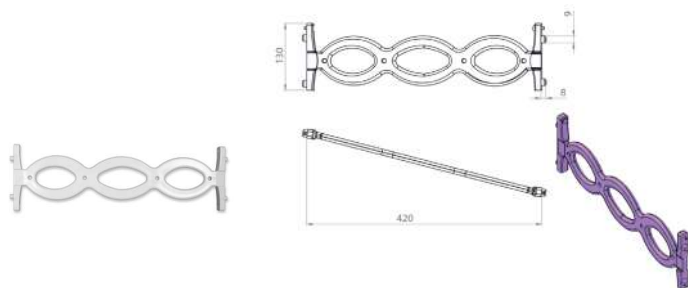
**Cradle Headboard
Plastic**

Product: Headbroad Plastic

Material: PPC

Funtional Areas: Cradle, Furniture

Color:



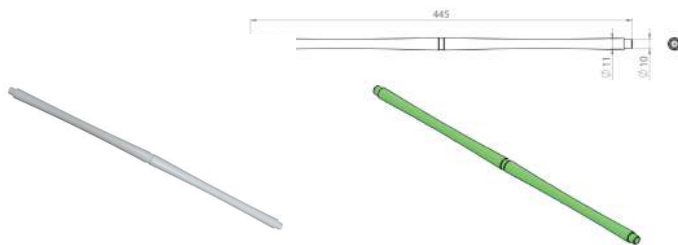
**Disassembled Cradle
Basket Rail**

Product: Cradle Rail

Material: ABS

Functional Areas: Cradle, Basket

Color:



**Disassembled Cradle
Basket Rail (Middle)**

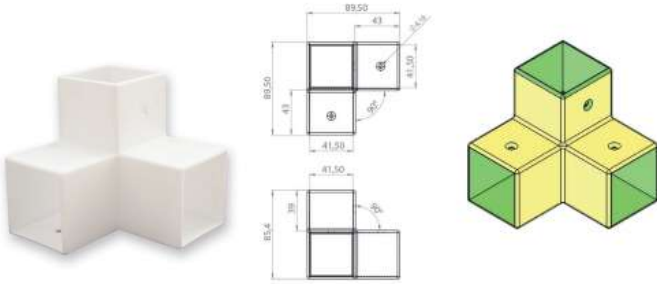
Product: Disassembled Cradle

Material: ABS

Functional Areas: Cradle, Basket

Color:





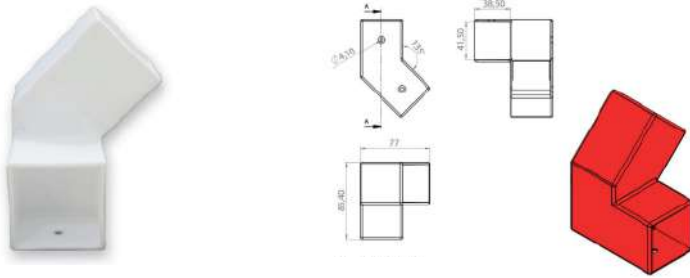
Montessori Corner Plastic (Middle)

Product: Corner Plastic

Material: PP

Functional Areas: Montessori Beds

Color:



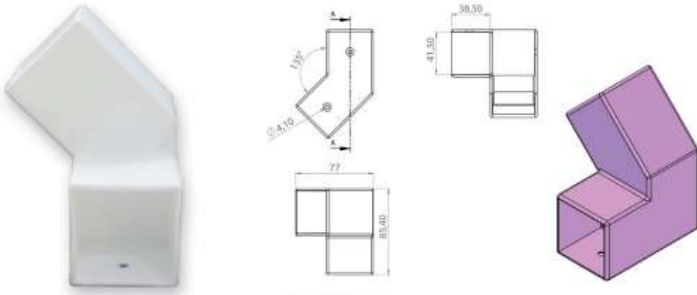
Montessori Corner Plastic (Right)

Product: Corner Plastic

Material: PP

Functional Areas: Montessori Beds

Color:



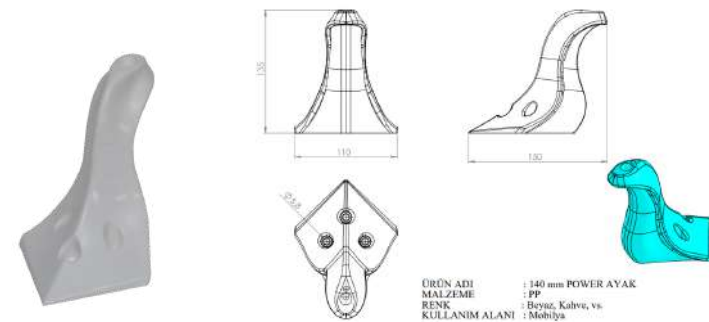
Montessori Corner Plastic (Left)

Product: Corner Plastic

Material: PP

Functional Areas: Montessori Beds

Color:



140mm Power Foot

Product: Corner Foot

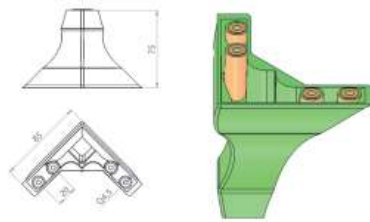
Material: PP

Functional Areas: Furniture

Color:



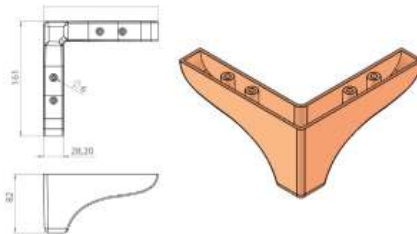
ÜRÜN ADI : 140 mm POWER AYAK
MALZEME : PP
RENK : Beyaz, Kahve, vs.
KULLANIM ALANI : Mobilya



**75mm
Lukens Corner Foot (Eco)**

Product: Corner Foot
Material: PPC - ABS
Functional Areas: Furniture, Sofa

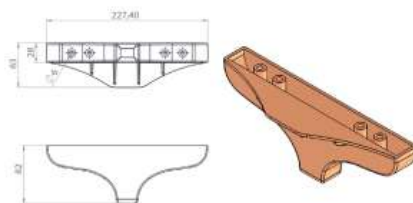
Color:



**80mm
Furniture Corner Foot**

Product: Corner Foot
Material: ABS
Functional Areas: Furniture, Sofa

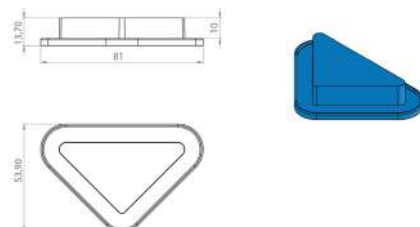
Color:



**80mm
Furniture Middle Foot**

Product: Corner Foot
Material: ABS
Functional Areas: Furniture, Sofa

Color:



**Table Base
Corner Plastic**

Product: Corner Plastic
Material: PP
Functional Areas: Furniture

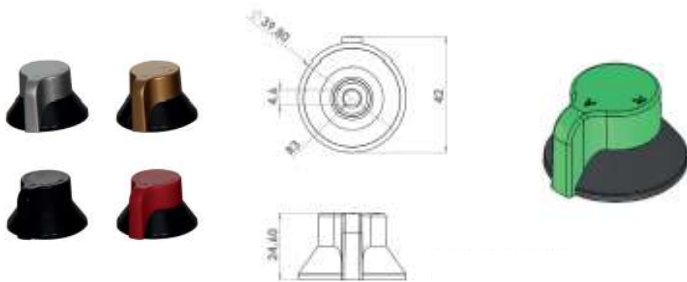
Color:






MACHINE GROUP

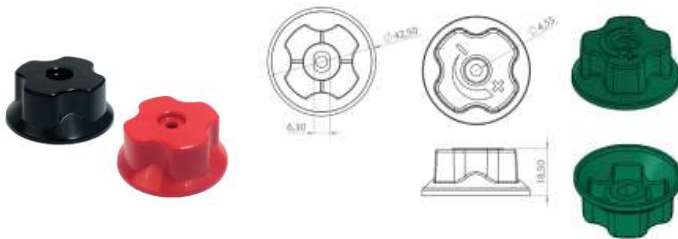




**Tea Boiler
Valve Button**

Product: Valve Button
Material: ABS
Functional Areas: Tea Boiler

Color: 



**Valve Button
(Large)**

Product: Valve Button
Material: ABS
Functional Areas: Various Valve

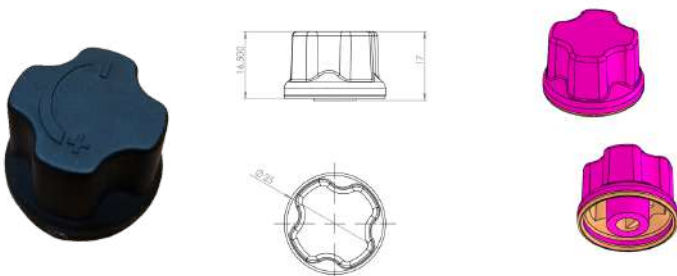
Color: 



**Narrow Ring
Stove Knob**

Product: Stove Knob
Material: ABS
Functional Areas: Various Valve

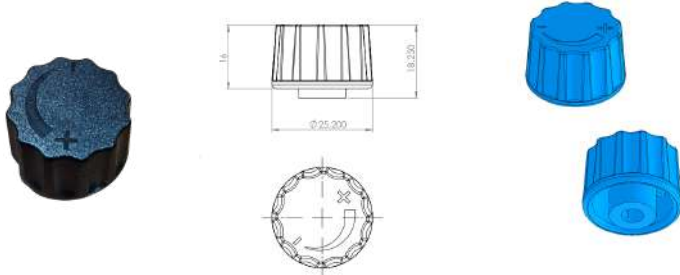
Color: 



**Portable
Stove Knob**

Product: Stove Knob
Material: PA6
Functional Areas: Various Valve

Color: 



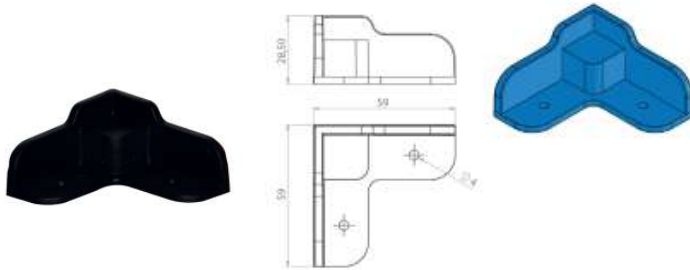
**Portable
Stove Knob (2)**

Product: Stove Knob

Material: PA6

Functional Areas: Tea Boiler

Color: 



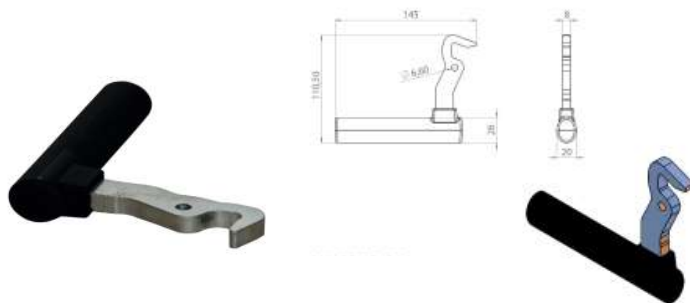
**Tea Boiler
Corner Plastic**

Product: Corner Plastic

Material: PA6

Functional Areas: Tea Boiler

Color: 



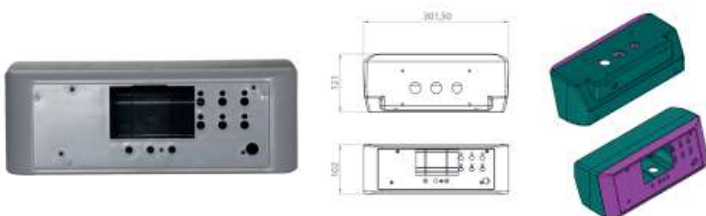
**Solid Fuel
Boiler Door Handle**

Product: Door Handle

Material: PA6

Functional Areas: Solid Fuel Boiler, Stove

Color: 



**Solid Fuel
Boiler Door Panel**

Product: Control Panel

Material: ABS

Functional Areas: Solid Fuel Boiler

Explanation : Suitable for fan-assisted and stoker-fired boilers.

Color: 

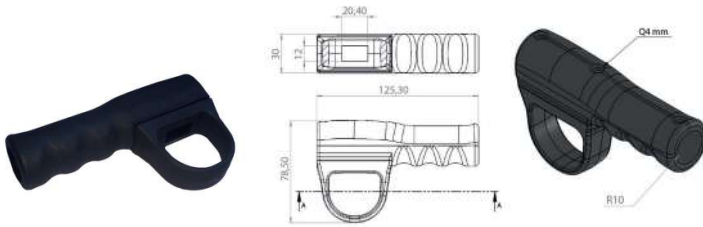
Plastic Trigger Handle

Product: Trigger Handle

Material: PA6

Functional Areas: PVC and Universal Machines

Color: 



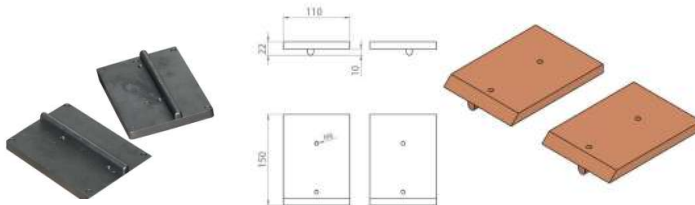
Adjustable Stat Assembly (Upper Section)

Product: Adjustable Stat Assembly

Material: Aluminum

Functional Areas: PVC Slat Cutting Machines

Color: 



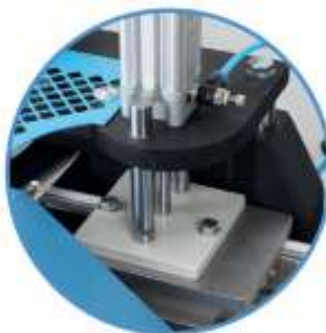
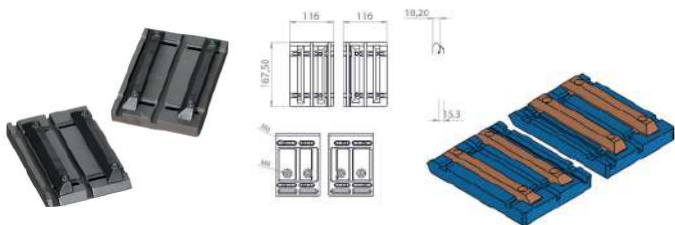
Adjustable Slat Mold (Lower Section)

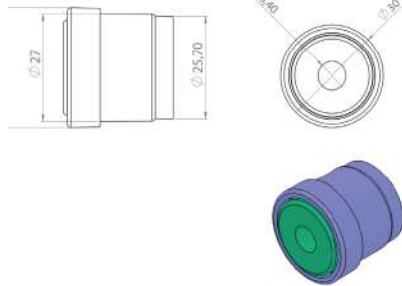
Product: Adjustable Slat Mold

Material: Aluminum

Functional Areas: PVC Slat Cutting Machines

Color: 





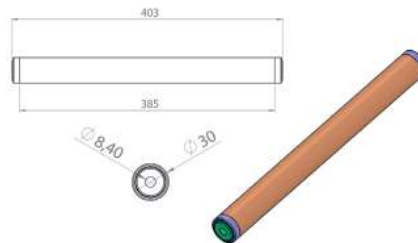
**Ø30mm
Conveyor Roller Head**

Product: Roller Head

Material: PA6

Functional Areas: Conveyor Roller

Color:



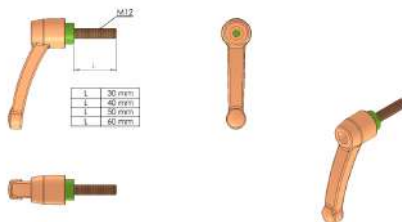
**Ø30mm
Conveyor Roller**

Product: Conveyor Roller

Material: PVC Pipe, PA6

Functional Areas: Conveyor Belt

Color:



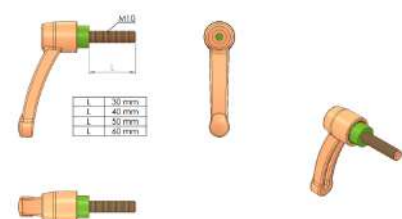
**M12
Hinged Arm**

Product: Hinged Arm

Material: PA6

Functional Areas: Machine Manufacturing

Color:



**M10
Hinged Arm**

Product: Hinged Arm

Material: PA6

Functional Areas: Machine Manufacturing

Color:





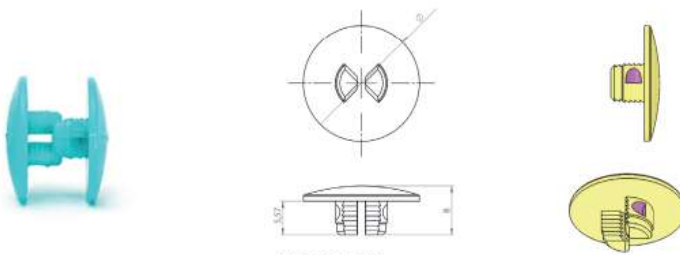
Plastic Head Bolt

Product: Bolt

Material: PP

Functional Areas: Universal

Color:



Double-Sided Plastic Rivet

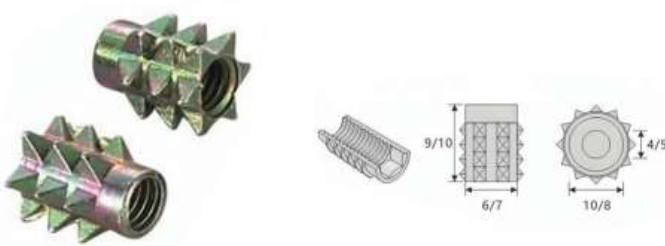
Product: Rivet

Material: PA6

Functional Areas: Various Connection Elements

Color:

All Colors



M4 Serrated Insert Nut

Product: Insert Nut

Material: Zinc Alloy

Color:



Cutting Diamond Tip Box (Large)

Material: PP

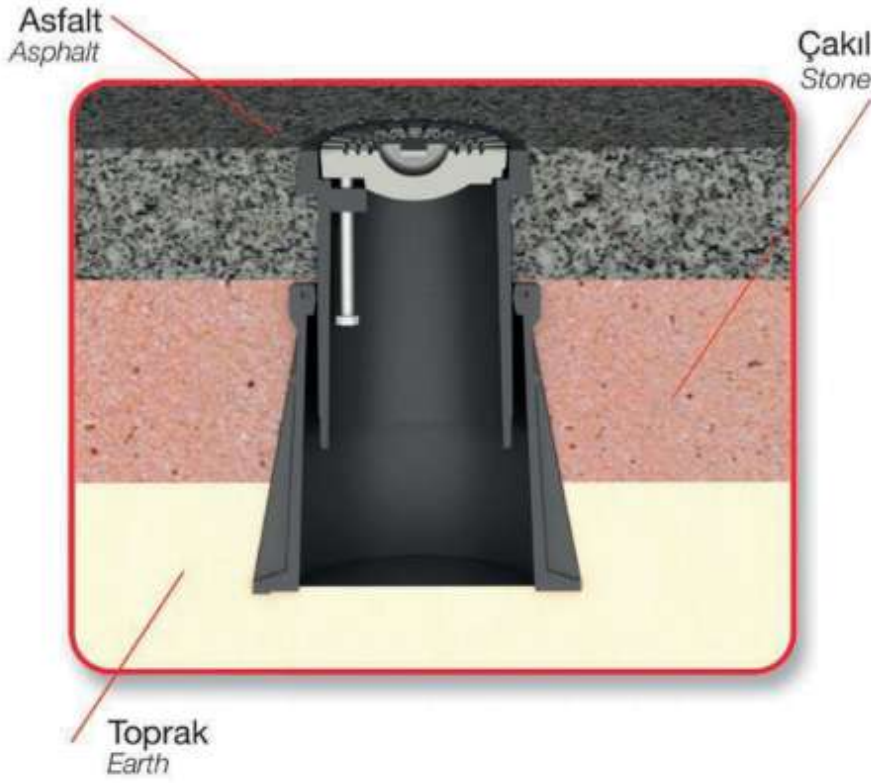


Cutting Diamond Tip Box (Small)

Material: PP



PLASTIC ADJUSTABLE BUSHING



Thanks to its height adjustment, it moves along with the asphalt, preventing protrusions on the roads and avoiding accidents caused by pedestrians stumbling.

Due to its plastic material, it is lightweight, providing convenience during transportation and assembly.

The bushing cover is made of GG25 cast iron.

All metals on the bushing are stainless and corrosion-resistant.



The bushing is used for the protection and above-ground control of valves installed on underground pipelines.

The bushing body is manufactured from Polyamide 6.6 raw material.

The bushing are resistant to temperatures up to +/-240 degrees.

It is suitable for heavy traffic conditions.

alpermak

Innovative Products





ISO 9001



ISO 45001



ISO 14001



ISO 13485



ISO 10002



ISO 45001



ISO 9001



ISO 14001



KAYAPA MH. ORKİDE CD. NO:1 16315 NİLÜFER / BURSA
www.alpermak.com
info@alpermak.com

